

# WESTERN WHEEL

GST

## Canmore country musician plays arts centre

BY TAMARA NEELY  
STAFF REPORTER

The audience at the Rotary Performing Arts Centre will be treated to a musical journey on Saturday, April 19.

That is the goal of Canmore-based singer-songwriter Cori Brewster.

"I love to perform and to tell stories and for the audience to be able to go home feeling a little better about their day," said Brewster, who'll be joined onstage by guitarist Steve Fischer. "We'll take them on a bit of a journey with our music and they will probably learn something about me and maybe about themselves."

Like all musicians, Brewster has to balance the creative side of making music with the business side. Unlike most musicians, this comes fairly easy for her since she was raised in an entrepreneurial home.

On the songwriting side, the day-to-day experiences of family and the wonder of travelling are dominant themes that wind their way into the folk, roots, country and Canadiana songs Brewster writes.

Brewster's latest CD, *Large Bird Leaving*, for example, features a song inspired by her travels called *What Casanova Told Me*.

"I like the idea of just being open to what you might learn in a different culture instead of taking your culture and ideas there," said Brewster.

On the business side, Brewster's approach is to take a broad look at where financial opportunities lie.

"A lot of artists struggle with that, but you have to embrace it," said Brewster. "If you want to have recognition in the (music) industry, creating the art is only one part of it."

Within her scope is not just touring and selling albums, but also applying for grants, writing songs for other musicians and pitching songs to film and television productions.

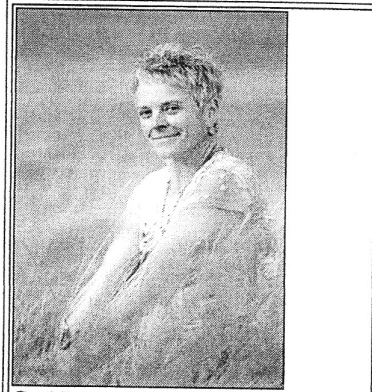
"We got a royalty cheque from (the television show) *Dawson Creek* – it was quite a nice chunk of change," said Brewster.

Her vigorous approach to tapping sources of income within the music industry as a whole offsets the trickle of cash available to independent musicians through the touring circuit.

"It is a real challenge in Canada to make it as an artist solely on your music," said Brewster. "In the United States you can go on the road and in a 200-mile radius you can play 20 gigs."

"Here you have to go to Regina and Winnipeg and that's thousands of miles for only a couple of gigs."

Tickets for Brewster's performance are \$25 and are available through The Station Cultural Centre, call (403) 938-3204. The doors open at 7:30 p.m. and the concert begins at 8 p.m.



Cori Brewster will play in Okotoks Saturday.